

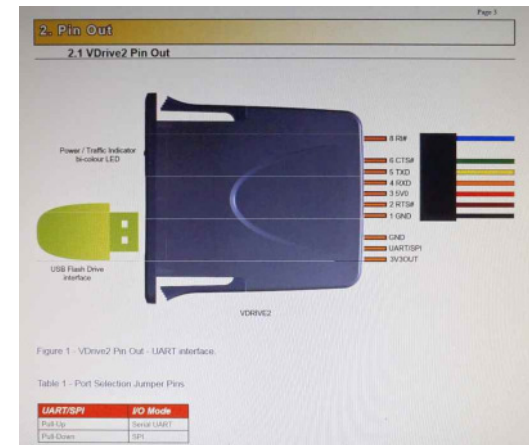
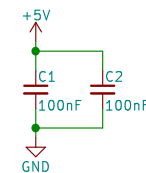
ZX Spectrum
Edge Connector

Supported by using:
System EPROM -> "15EPR6L2.ROM"

Typical command structure:

PRINT USR 15E3, STRING

String could be:
 "I" = Initialize; to be used at the beginning and every time a stick has been swapped
 "D" = Directory
 "LName" = load Basic program "Name".TAP - to be entered without file extension .TAP
 "LName,XXXX" = load code to address XXXX
 "SName" = saves Basic program "Name".TAP - to be entered without file extension .TAP
 "SName, xxxx, yyyy" = saves code block beginning at xxxx with a length of yyyy



based on:
 forum.tienhard.com
 sbetamax V1.0 of Jan2011 & ZXHeinz 2019

TOKA

Sheet: /
 File: VDrive Interface.sch

Title: VDrive2 - Interface for ZX Spectrum

Size: A4 Date: 2019-04-11 Rev: V1.0
 KiCad E.D.A. kicad 4.0.7 Id: 1/1